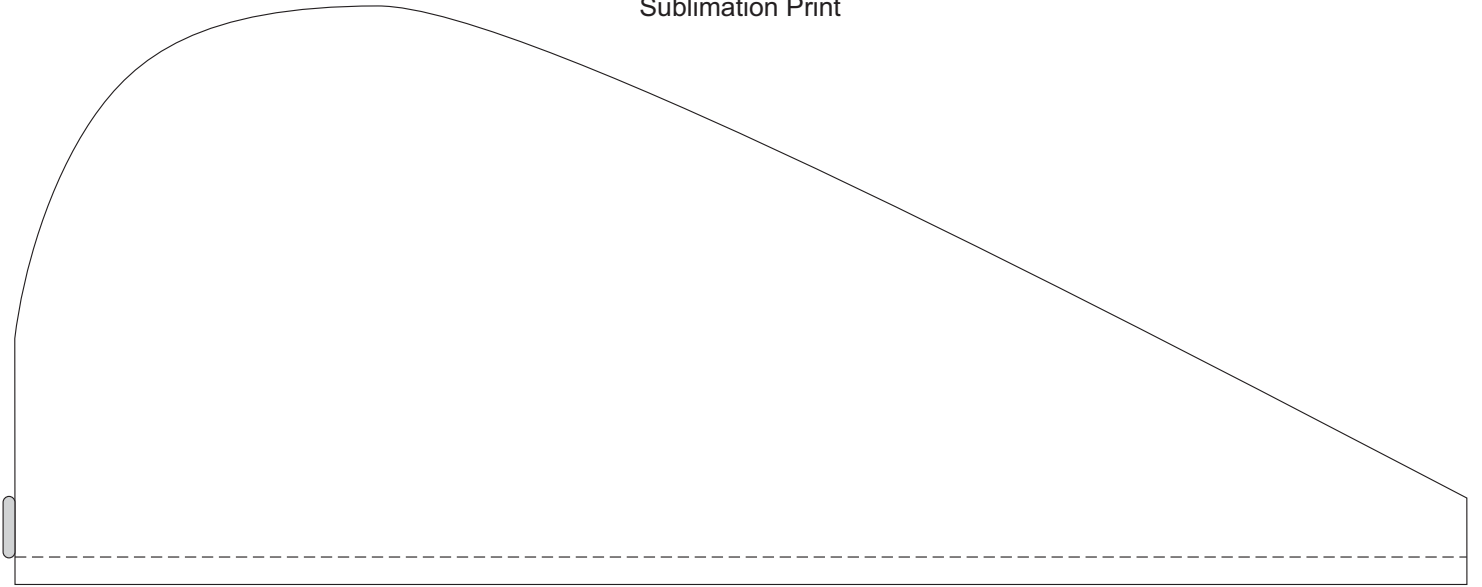
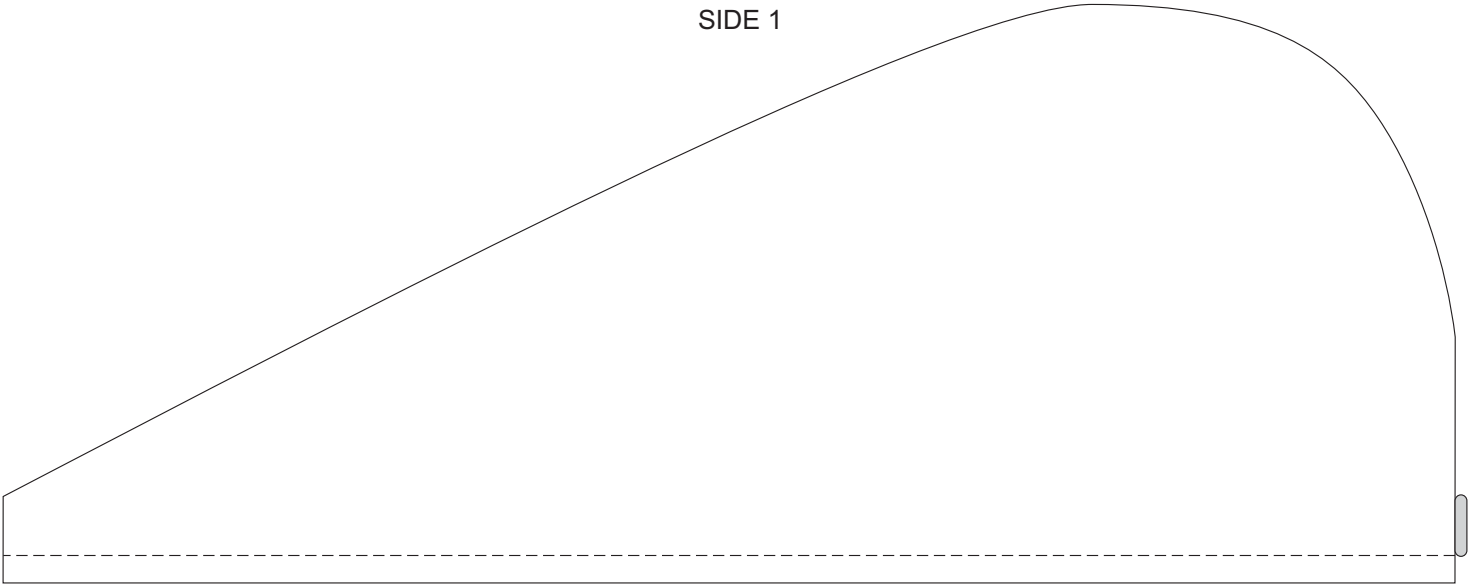


30% of Actual Size  
Sublimation Print

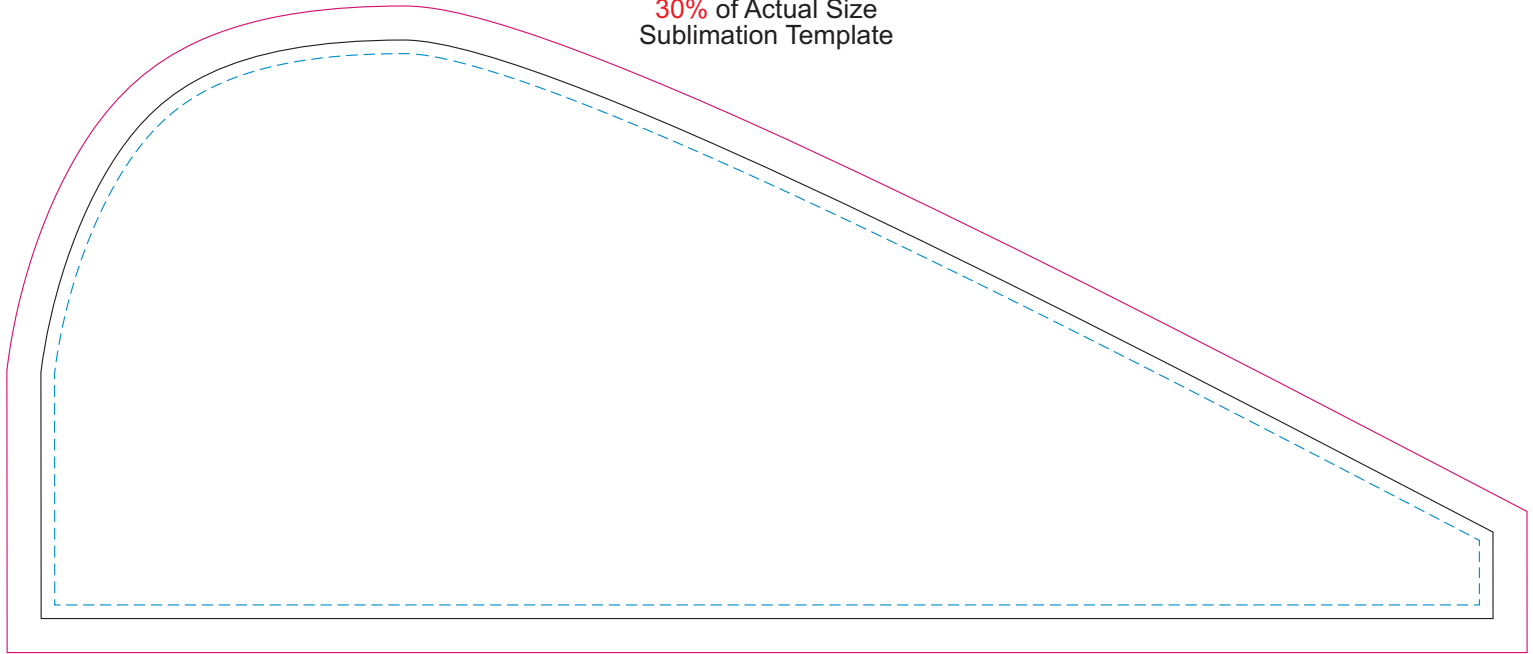


SIDE 1

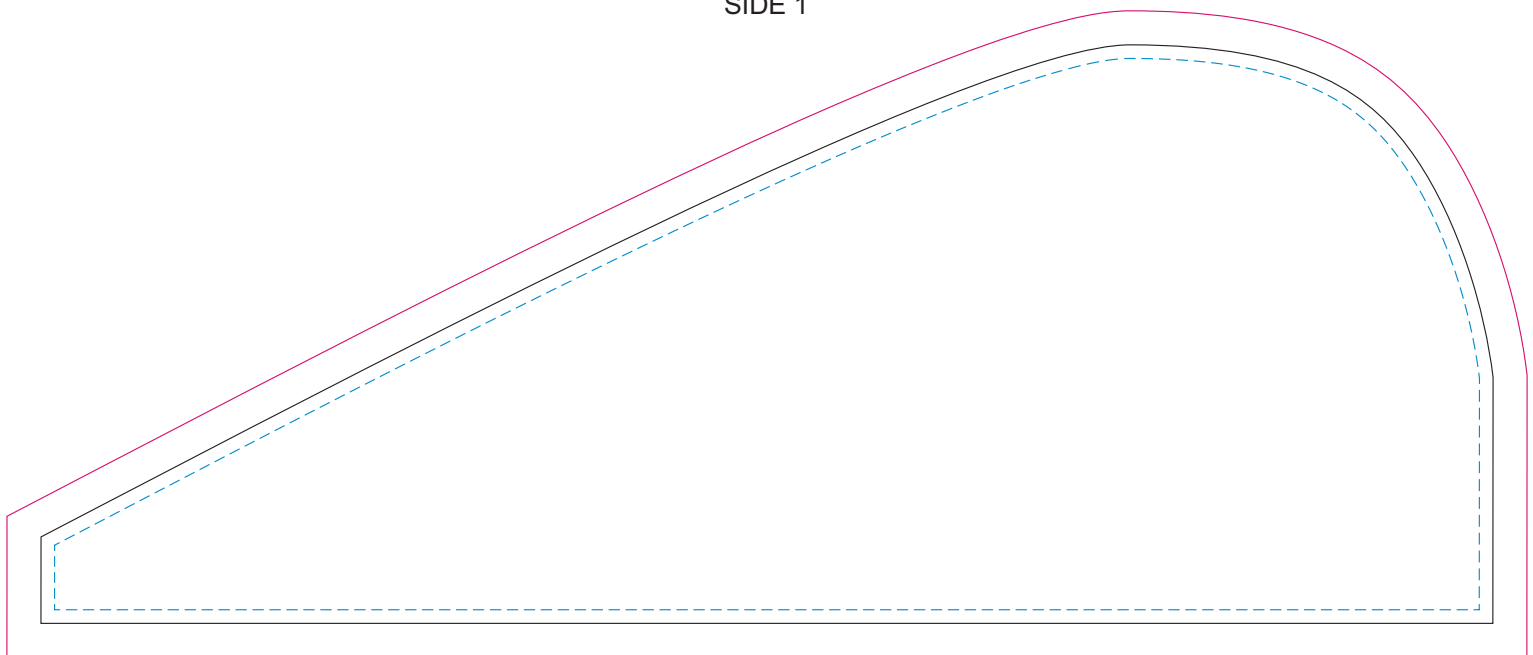


SIDE 2

30% of Actual Size  
Sublimation Template



SIDE 1



SIDE 2

Blue Line = The SIGNIFICANT PRINT AREA  
(Keep all critical images & text within this box)  
Black Line = Maximum print area  
Pink Line = Bleed off to here